

# Polling Districts, Places and Stations Review 2019



## Recommendations Report

### Introduction

Local Authorities must comply with a number of legislative requirements regarding the location and accessibility of Polling Districts and Polling Places. The mandatory review process comprises a number of specified steps set out in Schedule A1 to the Representation of the People Act 1983, which includes a public consultation.

The last review for Tamworth Borough Council was conducted in 2013. A full polling place and polling district review commenced on Tuesday 28 May and ended on Friday 19 July.

The review considered any representations from local residents and stakeholders in the borough, including any issues regarding access to premises or facilities for persons with disabilities. Any elector could make their views known and the process for doing so was publicised. In addition, the review considered the impact of the next four years' worth of planned residential developments.

In encouraging views, it is of course the case that the availability of suitable polling places is the key determining factor in the makeup of polling districts. Therefore, in asking for comments, we requested that alternative proposals should include suggestions for polling station locations.

It is the Returning Officer's role to select the polling stations. It will be Full Council which will make the decisions on any proposed changes to polling districts or polling places. The final scheme for polling arrangements will be adopted in accordance with the Council's constitution.

The polling districts, polling places and polling stations finally decided on will be in use for any polls called after 1 December 2019.

### Scope of the review

Tamworth is currently divided into 48 polling districts covered by 57 polling stations. Polling districts, the geographic subdivisions of each ward, as well as polling places for each of these districts were within the scope of this review. The review considered the continued suitability of existing arrangements and, where necessary, will make proposals for: "Change" or "no change" to the polling stations within those districts.

- The creation or removal of polling districts;
- "Change" or "no change" to the boundaries of polling districts;
- "Change" or "no change" to the referencing of those polling districts;
- "Change" or "no change" to the polling stations within those polling districts.

### Not in scope

Borough ward boundaries, county council boundaries and parliamentary constituency boundaries were not in the scope of this review.

The legislation requires that ward/county boundaries are reviewed by the Local Government Boundary Commission for England and the Electoral Commission and not by Local Authorities themselves. We do not have a mandate to suggest alterations to the boundaries between wards.

The review did not consider comments regarding local authority boundaries, neighbouring parliamentary constituencies, the name of local authorities or other electoral areas within or bordering Tamworth Borough Council.

## **Glossary of Terms**

### **Polling District**

A polling district is a geographical subdivision of an electoral area. For example a parliamentary constituency or a borough ward.

### **Polling Place**

A polling place is the area in which the Returning Officer selects the polling station. In Tamworth, it is recommended that polling places represent the same area as the polling district plus the adjoining polling district(s) to allow a greater degree of flexibility in deciding where a polling station should be located.

### **Polling Station**

The polling station is the room or building where the poll takes place. This location is selected by the Returning Officer.

### **Accessing information**

The report presents information for each ward of the borough. These are presented in alphabetical as follows:

- Amington
- Belgrave
- Bolehall
- Castle
- Glascote
- Mercian
- Spital
- Stonydelph
- Trinity
- Wilnecote

In order to illustrate those recommendations for each ward, maps of the existing arrangements as well as maps of our proposed arrangements are available on our polling station page:

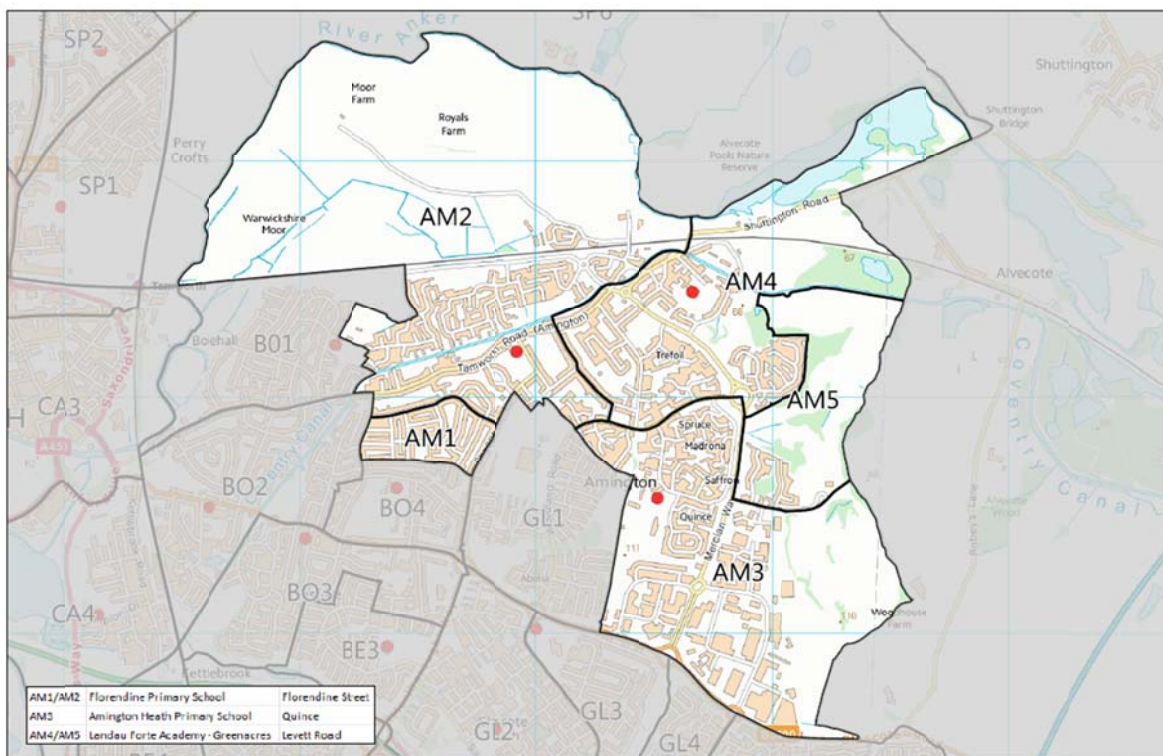
[http://www.tamworth.gov.uk/Polling\\_District\\_and\\_Places\\_review\\_2019](http://www.tamworth.gov.uk/Polling_District_and_Places_review_2019)

In the polling district information tables provided for each ward, the word “Electorate” refers to the total number of registered voters in the district, as of July 2019.

In the polling station information tables provided for each ward, the expression “Polling Station Electorate” refers to the total number of registered voters in the district who have opted to attend a polling station to vote, as of July 2019. This figure excludes electors from the district who may have opted to vote by other means. This figure informs us of the maximum number of electors who may attend the polling station on polling day.

# Amington Ward

## Existing Polling Districts



<i>Polling District</i>	<i>Polling Station</i>	<i>Electorate</i>	<i>Recommendations</i>
AM1	Florendine Primary School	610	Change - Amend polling district boundaries to better reflect natural geography and other existing boundaries in the area.
AM2	Florendine Primary School	2,252	Change - Amend polling district boundaries to better reflect natural geography and other existing boundaries in the area.
AM3	Amington Heath Primary School	1,442	No change
AM4	Landau Forte Greenacres	1,618	No change
AM5	Landau Forte Greenacres	344	No change

## Existing Polling Stations

<i>Polling Station</i>	<i>Polling District</i>	<i>Polling Station Electorate</i>	<i>Disabled Access</i>	<i>Recommendations</i>
Florendine Primary School	AM1	425	Yes	No change
Florendine Primary School	AM2	1,795	Yes	No change
Amington Heath Primary School	AM3	1,318	Yes	No change
Landau Forte Academy - Greenacres	AM4	1,328	Yes	No change
Landau Forte Academy - Greenacres	AM5	274	Yes	No change

## Recommendations

Following on from submissions received during the consultation period it is recommended that a small alteration to the boundaries between polling districts AM1 and AM2 be completed. This small change would not require an alteration to the current polling place but would better align the polling districts when taking into account the natural geography of the area and current ward boundaries.

This means that the following streets would move from polling district AM2 to polling district AM1:

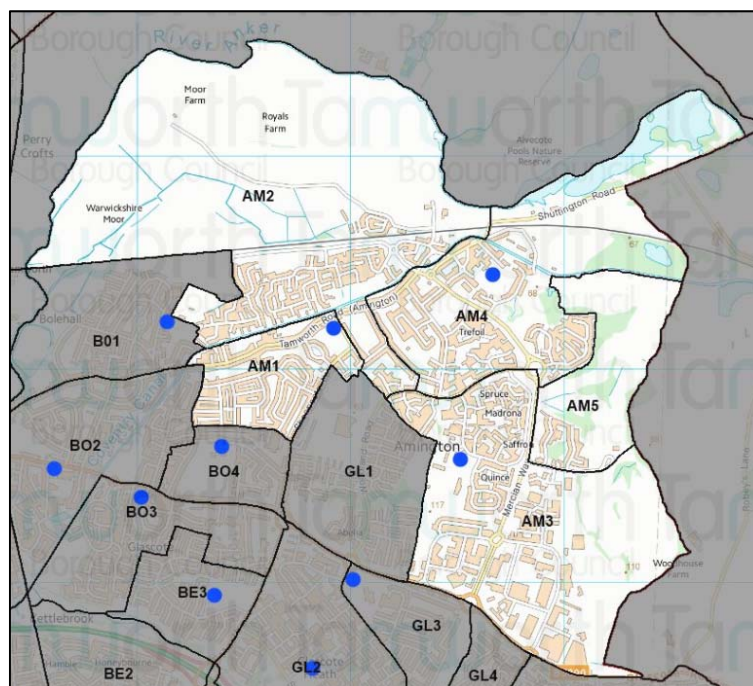
- Arden Close
- Argyle Street - Numbers 114 to 120 (evens)
- Beechwood Crescent
- Bridge Street
- Fairview Close
- Florendine Street
- Highfield Avenue
- Monks Way
- Sheepcote Lane – Numbers 105 – 117 (odds) and Numbers 156 to 168 (evens)
- Tamworth Road – Numbers 1 – 159 (odds) and 20 – 128 (evens). This is the section of Tamworth Road running from Argyle Street up to the canal bridge opposite Florendine Street)
- The Riddings
- Wesley Way
- Woodhurst Close

The remaining submissions relate to using school premises as a polling station. It should be noted that although the Amington Ward currently uses three schools as polling stations the head teachers are informed of scheduled polls several years in advance thus allowing ample time to plan for a Teacher Training Inset Day. This should help keep disruption and inconvenience to a minimum. Whilst head teachers must provide the Returning Officer with a suitable room to facilitate voting it is not the Returning Officer who chooses to close the school. This is a decision taken by the head teacher and in fact a number of schools that are used as polling stations throughout the borough remain either fully or partially open on polling days.

Schools are required under statute to be made available for voting purposes. This is partly due to the fact that as a public building the access must meet all requirements set out in the Equality Act 2010. Accessibility for disabled voters is a very important issue and ensuring that polling stations are suitable for all sorts of disability is essential. According to statistics provided by Staffordshire Observatory there are approximately 7,000 people within the borough who have mobility issues and an unknown number of people with other impediments. We must be very careful about not accidentally disenfranchising an elector as they are unable to access voting facilities easily. Section 16 of the Electoral Administration Act 2006 has placed a requirement on the local authority to review the accessibility of all polling stations. A review is undertaken at every poll and a polling station questionnaire is available for completion by electors. No complaints have been received at any of the recent elections in regard to accessibility issues in the Amington Ward. Therefore, no changes are proposed to any of the polling stations currently used.

Finally it is recommended that the polling place represent the same area as the polling district plus the adjoining polling district(s) to allow a greater degree of flexibility in deciding where a polling station should be located should the need arise.

## Summary of proposed new Polling Districts and Polling Stations



<i>New Polling District</i>	<i>Proposed Polling Station</i>	<i>Address</i>	<i>Estimated Electorate<sup>1</sup></i>	<i>Estimated Polling Station Electorate<sup>2</sup></i>	<i>No of polling stations</i>
AM1	Florendine Primary School	Florendine Street, Amington, Tamworth, B77 3DD	1971	1,616	1
AM2	Florendine Primary School	Florendine Street, Amington, Tamworth, B77 3DD	2007	1,646	1
AM3	Amington Heath Primary School	Quince, Amington, Tamworth, B77 4EN	1846	1,514	1
AM4/AM5	Landau Forte Academy - Greenacres	Levett Road, Amington, Tamworth, B77 4AB	2272	1,863	2
AM5	Landau Forte Greenacres	Levett Road, Amington, Tamworth, B77 4AB	2,860 <sup>3</sup>	2,345	Combined with one of the polling stations in AM4

<sup>1</sup> Estimated Electorate = Number of Properties x 2.6

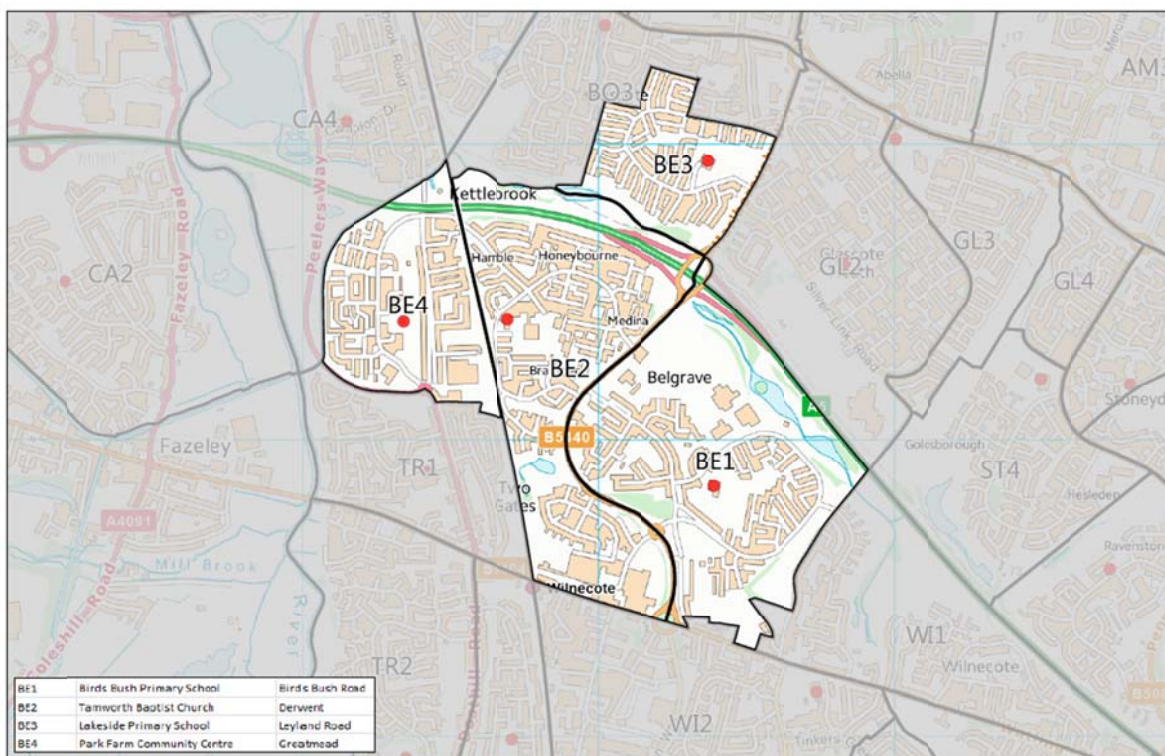
<sup>2</sup> Based on the average of 82% of electors choosing to attend a polling station.

<sup>3</sup> The estimated electorate figures are based on completion of building works = estimated number of properties x 2.6. The estimated Polling station electorate is based on 18% of electorate opting to vote by post. The electorate in this area will be monitored and when required a polling place within the polling district or adjacent polling districts will be found. Currently, the electorate in the area is 344 with 274 electors opting to cast their vote in a polling station.



# Belgrave Ward

## Existing Polling Districts



<i>Polling District</i>	<i>Polling Station</i>	<i>Electorate</i>	<i>Recommendations</i>
BE1	Birds Bush Primary School	1,429	Change Add the properties built on the former Daltons Site to polling district BE1.
BE2	Tamworth Baptist Church	2,023	Change - Remove the properties built on the former Daltons Site and add to polling district BE1.
BE3	Lakeside Primary School	986	No change
BE4	Park Farm Community Centre	1,377	No change

## Existing Polling Stations

<i>Polling Station</i>	<i>Polling District</i>	<i>Polling Station Electorate</i>	<i>Disabled Access</i>	<i>Recommendations</i>
Birds Bush Primary School	BE1	1,230	Yes	No change
Tamworth Baptist Church	BE2	1,742	Yes	Add the properties built on the former Daltons Site to polling district BE1.
Lakeside Primary School	BE3	815	Yes	No change
Park Farm Community Centre	BE4	1,172	Yes	No change





## Recommendations

As the development off Marlborough Way on the former Daltons Site has grown considerably since the last review it is recommended to move this housing estate into the BE1 polling district. This would mean that the following streets would move from the BE2 polling district into the BE1 polling district:

- Garten Close
- Gowen Close
- Harport Close
- Harrow Close
- Laggan Close
- Leven Road
- Lindores Road
- Lowes Drive
- Lyon Drive
- Maree Walk
- Morton Close

The remaining submissions relate to using school premises as polling stations. It should be noted that although the Belgrave Ward currently uses two schools as polling stations the head teachers are informed of scheduled polls several years in advance thus allowing ample time to plan for a Teacher Training Inset Day. This should help keep disruption and inconvenience to a minimum. Whilst head teachers must provide Returning Officers with a suitable room to facilitate voting it is not the Returning Officer who chooses to close the school. This is a decision taken by the head teacher and in fact a number of schools that are used as polling stations throughout the borough remain either fully or partially open on polling days.

Schools are required under statute to be made available for voting purposes. This is partly due to the fact that as a public building the access must meet all requirements set out in the Equality Act 2010. Accessibility for disabled voters is a very important issue and ensuring that the polling stations are suitable for all sorts of disability is essential. According to statistics provided by Staffordshire Observatory there are approximately 7,000 people within the borough who have mobility issues and an unknown number of people with other impediments. We must be very careful about not accidentally disenfranchising an elector as they are unable to access voting facilities easily. Section 16 of the Electoral Administration Act 2006 has placed a requirement on the local authority to review the accessibility of all polling stations. This review is undertaken at every poll and includes a polling station questionnaire that electors can complete if they wish to. No complaints have been received at the recent elections in regard to accessibility issues. Therefore, no changes are proposed to the current polling stations.

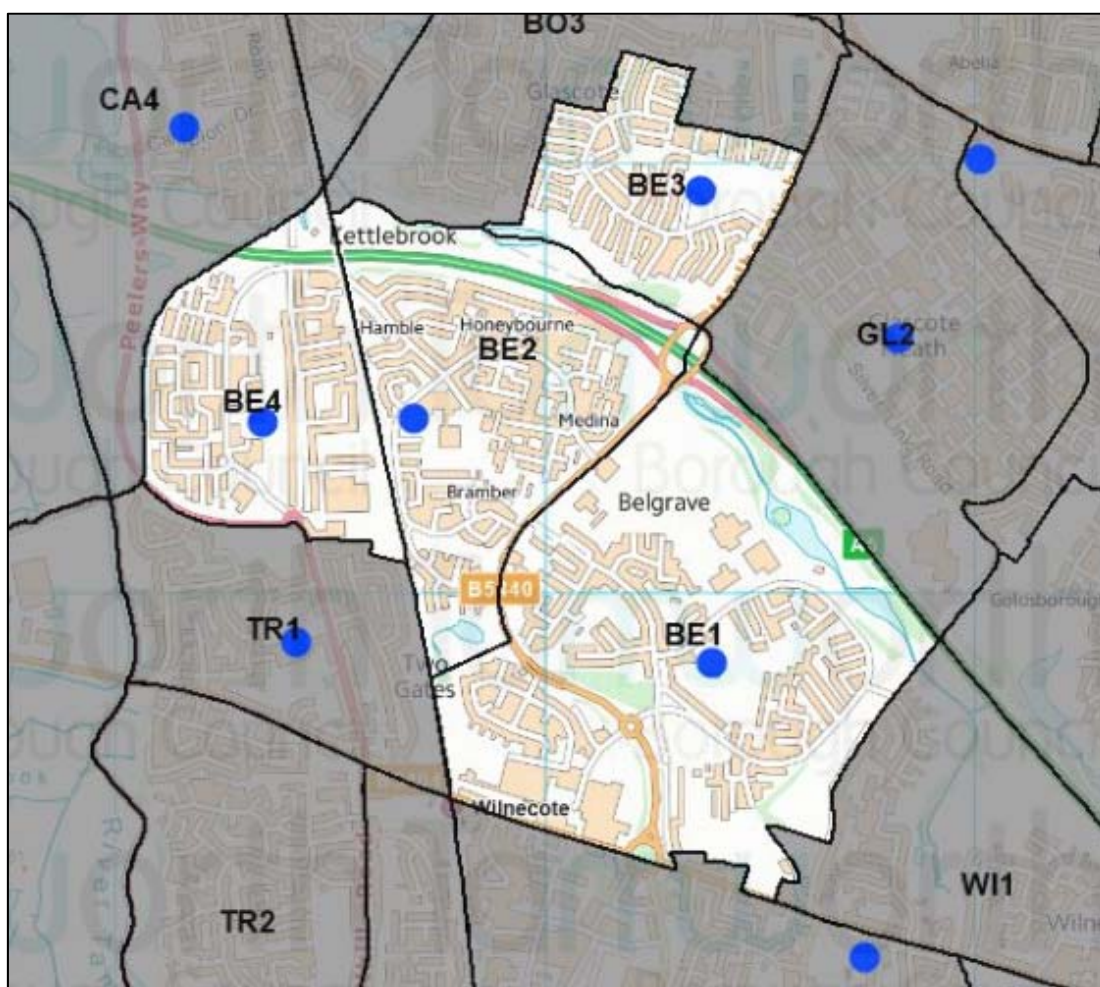
Perhaps the most fundamental point to make here is that there is no such thing within the borough or possibly the country as a purpose built polling station. Secondly, none are owned/under the control of the Returning Officer but are instead hired for the day of poll. The premises that are used within the borough range from church halls, schools, to community centres and finally temporary stations. It is important to remember the elector when selecting suitable premises for the poll. This can at times cause conflict between what premises are available and providing a fully accessible polling station that is convenient to use.

The Representation of the People Act 1983 places an obligation on local authorities, so far as reasonable and practicable, to designate polling places that are accessible to disabled people and keep them under review. When selecting a polling place it is essential that regard should be given to ensure it offers accessibility for disabled people as stated by the Equalities and Human Rights Commission. If the Authority was to move away from a perfectly accessible building in favour of a temporary station so that the location is slightly more convenient it could open the door for a claim regarding disability discrimination.

Postal voting is not the answer to this issue. Postal voting still remains inaccessible to many disabled electors, particularly those with visual impairments, dexterity issues, learning difficulties and low literacy. Postal voting should be a choice, not the only option.

Finally it is recommended that polling place represents the same area as the polling district plus the adjoining polling district(s) to allow a greater degree of flexibility in deciding where a polling station should be located should the need arise.

## Summary of proposed new Polling Districts and Polling Stations



<i>New Polling District</i>	<i>Proposed Polling Station</i>	<i>Address</i>	<i>Estimated Electorate<sup>1</sup></i>	<i>Estimated Polling Station Electorate<sup>2</sup></i>	<i>No of polling stations</i>
BE1	Birds Bush Primary School	Birds Bush Road, Belgrave, B77 2NE	2,688	2,204	2
BE2	Tamworth Baptist Church	Derwent, Off Field Farm Road, B77 2LD	2,254	1,848	2
BE3	Lakeside Primary School	Leyland Road, Glascoth, B77 2SA	1,334	1,094	1
BE4	Park Farm Community Centre	Greatmead, Kettlebrook, B77 1DL	1,940	1,590	1

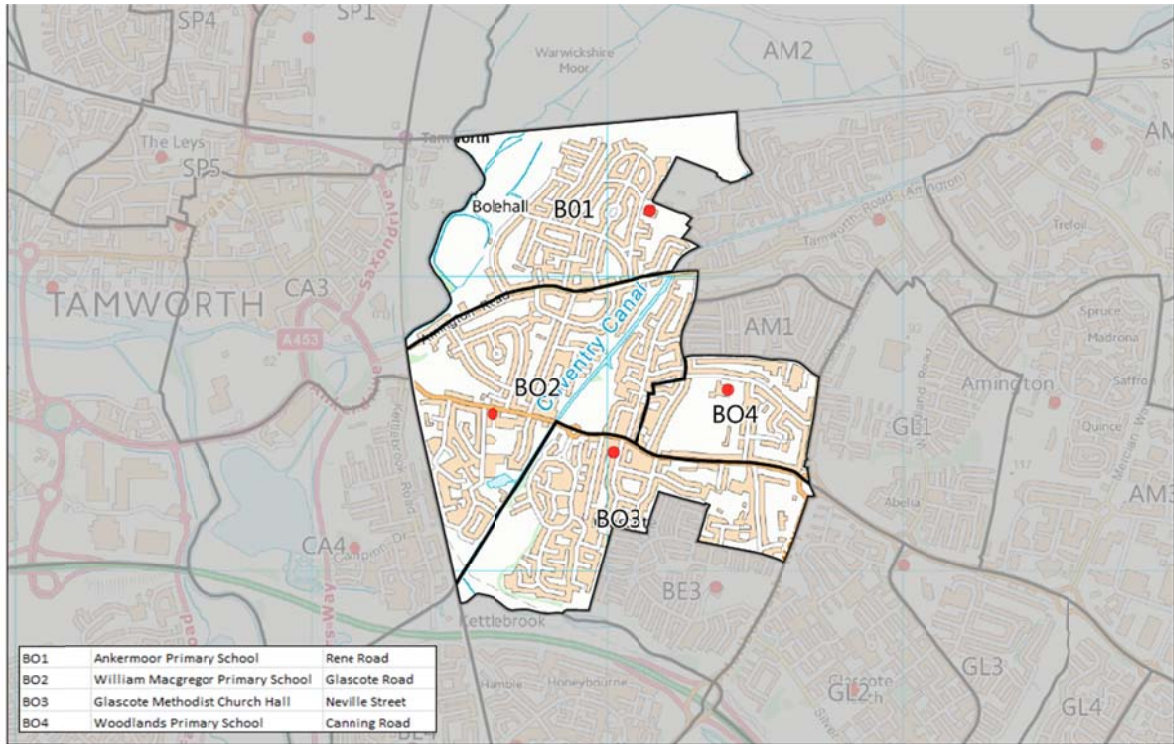
<sup>1</sup> Estimated Electorate = Number of Properties x 2.6

<sup>2</sup> Based on the average of 82% of electors choosing to attend a polling station.



# Bolehall Ward

## Existing Polling Districts



<i>Polling District</i>	<i>Polling Station</i>	<i>Electorate</i>	<i>Recommendations</i>
BO1	Ankermoor Primary School	1,277	No change
BO2	William Macgregor Primary School	2,232	No change
BO3	Glascote Methodist Church	1,441	No change
BO4	Woodlands Primary School	766	No change

## Existing Polling Stations

<i>Polling Station</i>	<i>Polling District</i>	<i>Polling Station Electorate</i>	<i>Disabled Access</i>	<i>Recommendations</i>
Ankermoor Primary School	BO1	1,062	Yes	No change
William Macgregor Primary School	BO2	1,887	Yes	No change
Glascote Methodist Church	BO3	1,249	Yes	No change
Woodlands Primary School	BO4	620	Yes	No change

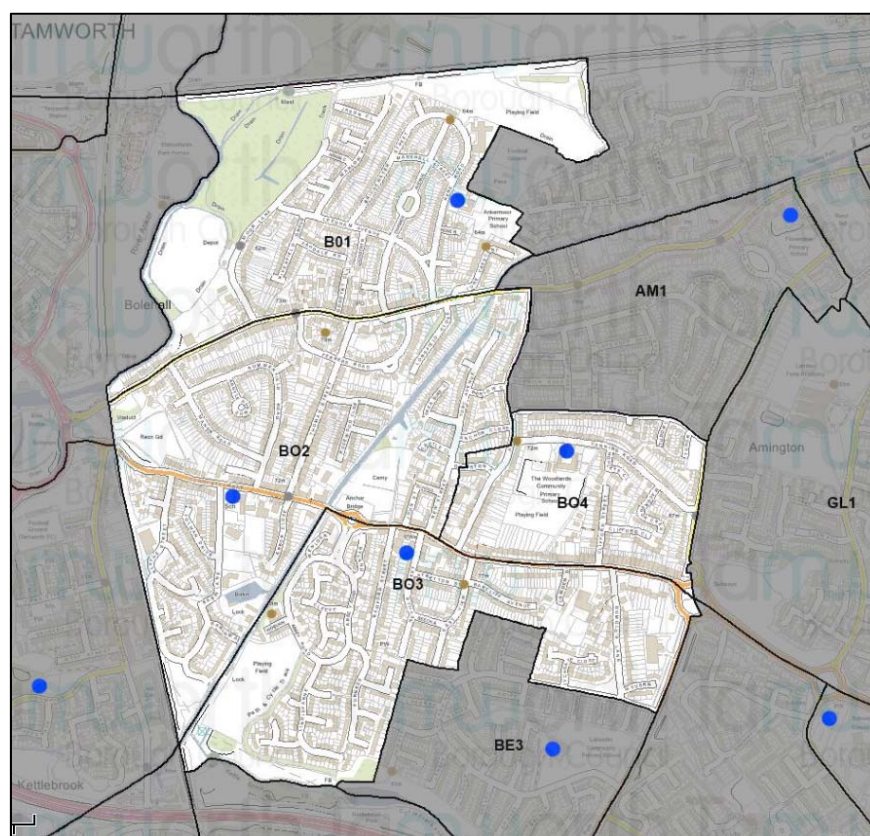
## **Recommendations**

No alternatives to the current polling district and polling place scheme were suggested as part of the consultation. No complaints have been received from any electors regarding the provision of polling places or the polling station facilities provided. Therefore, it is recommended that no changes are made to the polling districts within the Bolehall Ward.

It is also recommended that polling place represent the same area as the polling district plus the adjoining polling district(s) to allow a greater degree of flexibility in deciding where a polling station should be located should the need arise.



## Summary of proposed new Polling Districts and Polling Stations



<i>New Polling District</i>	<i>Proposed Polling Station</i>	<i>Address</i>	<i>Estimated Electorate<sup>1</sup></i>	<i>Estimated Polling Station Electorate<sup>2</sup></i>	<i>No of polling stations</i>
BO1	Ankermoor Primary School	Ankermoor Primary School, Rene Road, Bolehall, B77 3NW	1,281	1,073	1
BO2	William Macgregor Primary School	William Macgregor Primary School, Glascote Road, Tamworth, B77 2AF	2,224	1,884	2
BO3	Glascote Methodist Church	William Macgregor Primary School, Glascote Road, Tamworth, B77 2AF	1,432	1,243	1
BO4	Woodlands Primary School	Glascote Methodist Church Hall, Neville Street, Glascote, B77 2BA	7,65	6,21	1

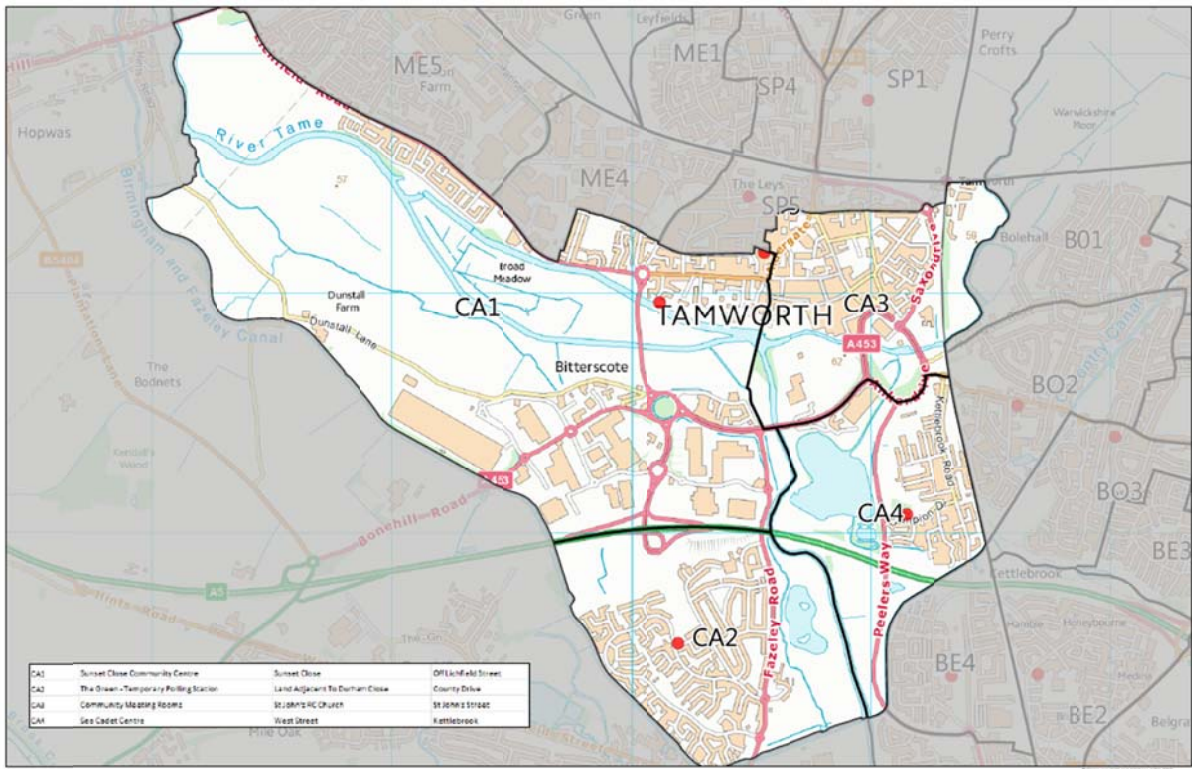
<sup>1</sup> Estimated Electorate = Number of Properties x 2.6

<sup>2</sup> Based on the average of 82% of electors choosing to attend a polling station.



# Castle Ward

## Existing Polling Districts



<i>Polling District</i>	<i>Polling Station</i>	<i>Electorate</i>	<i>Recommendations</i>
CA1	Sunset Close Community Centre	1734	No change
CA2	The Green – Temporary Station	2110	No change
CA3	Community Meeting Room, St John's RC Church	858	No change
CA4	Sea Cadet Centre	925	No change

## Existing Polling Stations

<i>Polling Station</i>	<i>Polling District</i>	<i>Polling Station Electorate</i>	<i>Disabled Access</i>	<i>Recommendations</i>
Sunset Close Community Centre	CA1	1349	Yes	No change
The Green – Temporary Station	CA2	1694	Yes <sup>1</sup>	No change
Community Meeting Room, St John's RC Church	CA3	703	Yes	No change
Sea Cadet Centre	CA4	753	Yes	No change

<sup>1</sup> Although temporary stations are suitably equipped to enable access for all voters (ramps and handrails for disabled access) there are still ongoing concerns due to inherent characteristics of mobile units, such as their narrow entrance and limited internal area.

## Recommendations

A submission was received from the Tamworth Conservative Councillors requesting that the Oxbridge Estate and neighbouring properties becomes a polling district in their own right with electors sent to the Buckingham Road temporary polling station (ME5) in the neighbouring Mercian Ward. On paper this seems quite a logical proposition and has been considered carefully but in reality there would be a number of issues. Firstly, it is not sensible to move electors from a disabled friendly building like Sunset Close Community Centre which has dedicated disabled access and has parking albeit limited to a temporary station which has none of these. These properties are situated on a convenient public transport route that stops and collects passengers on Lichfield Street at the end of Sunset Close. There are no transport links to the temporary station on Buckingham Road. A move here would also mean that electors would be need to cross a very busy road that is well used by heavy goods vehicles and others accessing the neighbouring industrial estate. There is no pedestrian crossing on this road to ensure that less able bodied electors could cross the road safely. A move here would also require another temporary polling station as the existing temporary station covering the ME5 polling district could not accommodate the additional electors from this area particularly at a high turnout election. The estimated cost for an additional temporary station is in the region of £1,300 or approximately £5 for every elector on this housing estate whether they vote at a polling station or not. Presently, only 289 out of 418 electors from this estate chose to vote at a polling station and turnout in 2019 at Sunset Close Community Centre for the entire CA1 polling district was an average of 17%.

Temporary polling stations are only used where there is no suitable alternative in the locality. Although, temporary stations are suitably equipped to enable access for all voters (ramps and handrails for disabled access) there are still ongoing concerns due to the inherent characteristics of temporary stations, such as their narrow entrance and limited internal area and access issues from paths across uneven/muddy ground which is exacerbated if the weather is poor on or around polling day. If the Authority was to move away from a perfectly accessible building in favour of a temporary station so that the location is slightly more convenient it could open the door for a claim regarding disability discrimination. Complaints have been received regarding accessibility to the temporary station on Buckingham Road at the recent elections in May 2019. These complaints were in regard to the uneven surface surrounding the temporary station. Therefore, it is not practical to send more electors to a polling station where we are aware of accessibility issues and for this reason I am recommending a “no change” to the CA1 polling district.

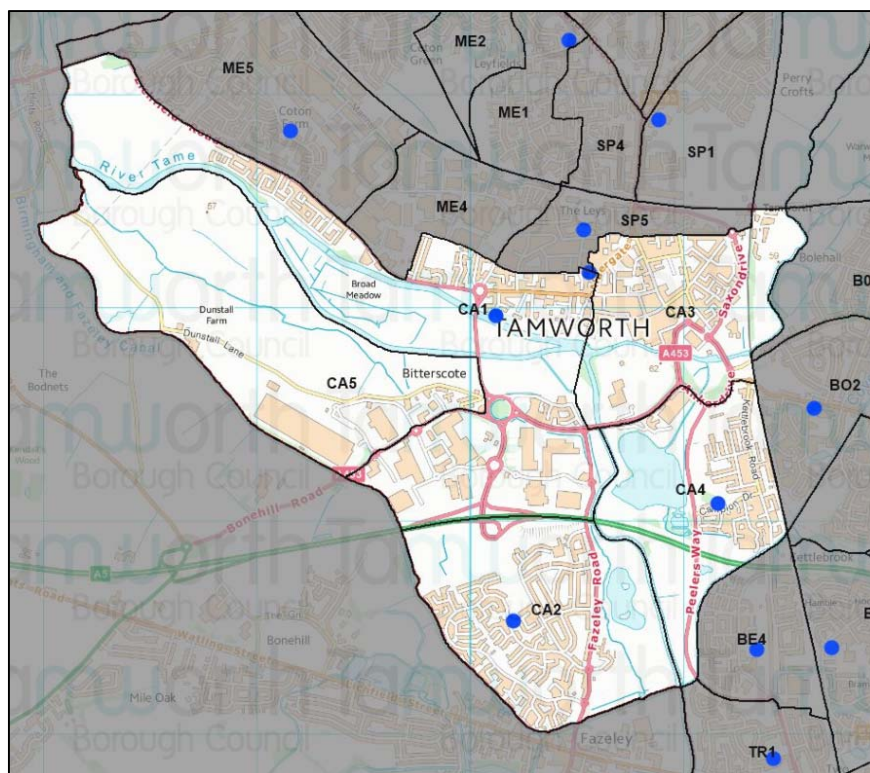
The estate currently being built on the former Dunstall Farm site will become the newly created CA5 polling district. The electorate in this polling district will be monitored and when required a polling station within the polling district or adjacent polling districts will be found. For this reason it is recommended that polling place represent the same area as the polling district plus the adjoining polling district(s) within the ward to allow a greater degree of flexibility in deciding where a polling station should be located should the need arise.

Five other submissions were received regarding the remaining polling districts, places and stations in the Castle Ward all recommended “no change”. Therefore, as there have also been no comments made by any electors asking for change at any of the recent elections via our polling station questionnaires or as part of this consultation it is recommended that the polling districts below do not have any changes made to them with the exception of the creation of the new CA5 polling district:

- CA1
- CA2
- CA3
- CA4



## Summary of proposed new Polling Districts and Polling Stations



<i>New Polling District</i>	<i>Proposed Polling Station</i>	<i>Address</i>	<i>Estimated Electorate<sup>i</sup></i>	<i>Estimated Polling Station Electorate<sup>ii</sup></i>	<i>No of polling stations</i>
CA1	Sunset Close Community Centre	Sunset Close, Off Lichfield Street, B79 7QJ	3,164	2,595	2
CA2	The Green – Temporary Station	Land Adjacent to Durham Close, County Drive	2,915	2,390	2
CA3	Community Meeting Room, St John's RC Church	St John's RC Church, St John's Street, B79 7EX	1,882	1,544	1
CA4	Sea Cadet Centre	St John's RC Church, St John's Street, B79 7EX	1,420	1,164	1
CA5	Sunset Close Community Centre	Sunset Close, Off Lichfield Street, B79 7QJ	2,119 <sup>iii</sup>	1,738	Combine with polling stations in CA1 until electorate is large enough for own polling station

<sup>i</sup> Estimated Electorate = Number of Properties x 2.6

<sup>ii</sup> Estimated Polling Station Electorate = Based on the average of 82% of electors choosing to attend a polling station

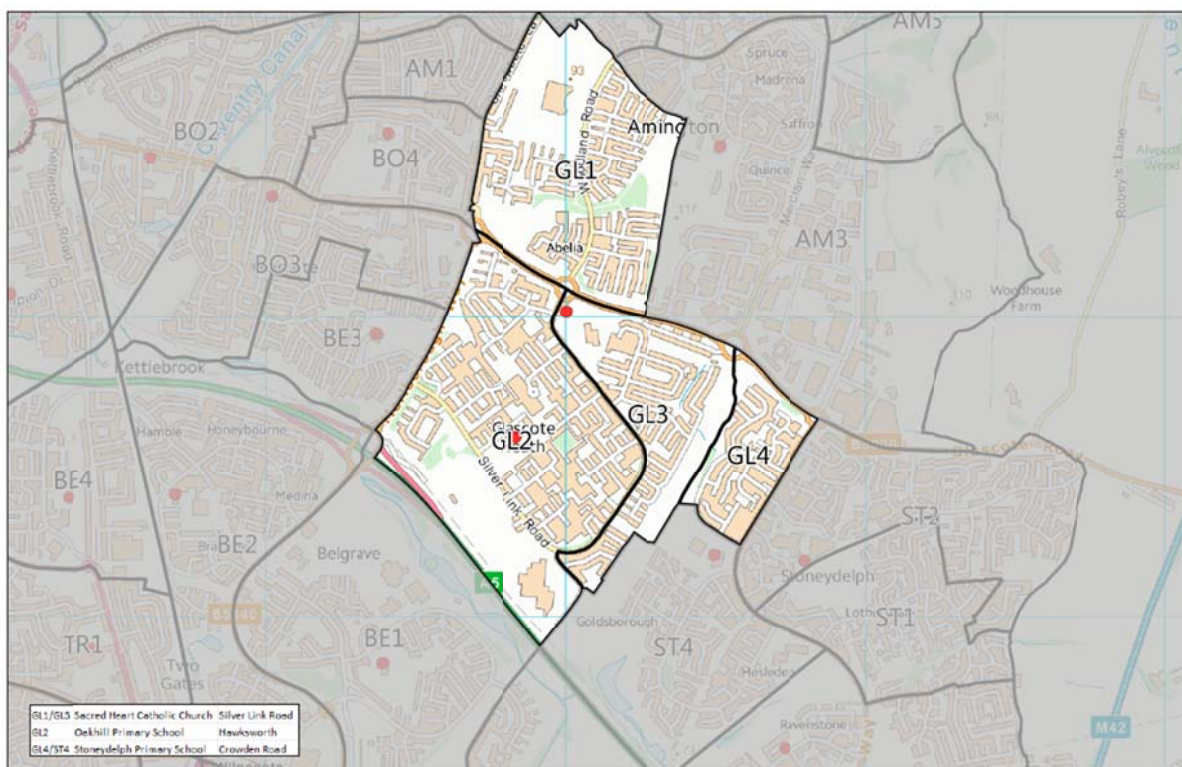
<sup>iii</sup> The estimated electorate figures are based on completion of building works = estimated number of properties x 2.6. The estimated Polling station electorate is based on 18% of electorate opting to vote by post. The electorate in the area will be monitored and when required a polling place within the polling district or adjacent polling districts will be found. There are no registered electors as yet in this area.





# Glascote Ward

## Existing Polling Districts



<i>Polling District</i>	<i>Polling Station</i>	<i>Electorate</i>	<i>Recommendations</i>
GL1	Sacred Heart Catholic Church	1535	No change
GL2	Oakhill Primary School	2417	No change
GL3	Sacred Heart Catholic Church	951	No change
GL4	Stoneydelph Primary School	611	No change

## Existing Polling Stations

<i>Polling Station</i>	<i>Polling District</i>	<i>Polling Station Electorate</i>	<i>Disabled Access</i>	<i>Recommendations</i>
Sacred Heart Catholic Church	GL1	1225	Yes	No change
Oakhill Primary School	GL2	2059	Yes	No change
Sacred Heart Catholic Church	GL3	760	Yes	No change
Stoneydelph Primary School	GL4	549	Yes	No change

## Recommendations

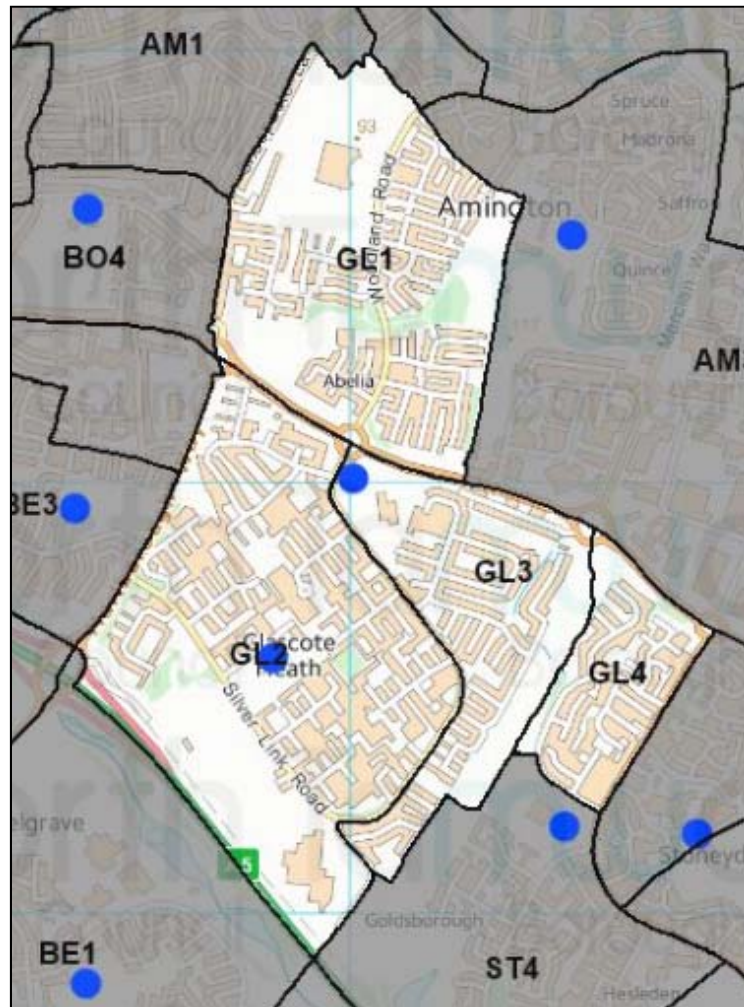
A submission was received from Tamworth Conservatives and Tamworth Conservative Association requesting that the GL1 polling district was served by a temporary polling station located somewhere in polling district. No specific location was identified as part of the submission. Any land that would be large enough to site a temporary station is also not flat and would be very difficult if not impossible to access for a heavy goods vehicle as the entrances to potential site currently have concrete bollards preventing access for large vehicle. Currently, the GL1 polling district vote at the Sacred Heart RC Church on Silverlink Road. I believe that this building is ideal for voting purposes as it offers plenty of parking, and is on the number 7 bus route which runs regularly along Woodlands Road and Silverlink Road. It is not practical or sensible to move to a temporary station when an excellent building that meets the requirements set out in the Equality Act 2010 and that currently serves the community is available. The current location is well known and established to the community in the area. No electors have asked for such a move and if it were to go ahead it would be a step backwards for electors as no parking would be available and access for the disabled would at the very least be compromised. The current polling station at the Sacred Heart RC Church also meets the requirements set out by the Electoral Commission.

Temporary polling stations are only used where there is no suitable alternative in the locality. Although, temporary stations are suitably equipped to enable access for all voters (ramps and handrails for disabled access) there are still ongoing concerns due to the inherent characteristics of temporary stations, such as their narrow entrance and limited internal area and access issues from paths across uneven/muddy ground which is exacerbated if the weather is poor on or around polling day. If the Authority was to move away from a perfectly accessible building in favour of a temporary station so that the location is slightly more convenient it could open the door for a claim regarding disability discrimination.

Two other submissions were received regarding the polling districts, polling places and polling station within the Glascote Ward all recommending "no change". There have been no comments made by electors asking for change at the recent elections or as part of this consultation relating to any of the polling districts, polling places or polling station within the ward. Therefore, for this reason I am recommending that the polling districts, polling places and polling stations do not have any changes made to them.

It is recommended that polling place represent the same area as the polling district plus the adjoining polling district(s) to allow a greater degree of flexibility in deciding where a polling station should be located should the need arise.

## Summary of proposed new Polling Districts and Polling Stations



<i>New Polling District</i>	<i>Proposed Polling Station</i>	<i>Address</i>	<i>Estimated Electorate<sup>1</sup></i>	<i>Estimated Polling Station Electorate<sup>2</sup></i>	<i>No of polling stations</i>
GL1	Sacred Heart Catholic Church	Silver Link Road, Glascote Heath, B77 2EA	2,161	1,772	2
GL2	Oakhill Primary School	Hawksworth, Glascote Heath, B77 2HH	3,658	3,000	2
GL3	Sacred Heart Catholic Church	Silver Link Road, Glascote Heath, B77 2EA	1,323	1,085	1
GL4	Stoneydelph Primary School	Crowden Road, Stonydelph, B77 4LS	978	802	1

<sup>1</sup> Estimated Electorate = Number of Properties x 2.6

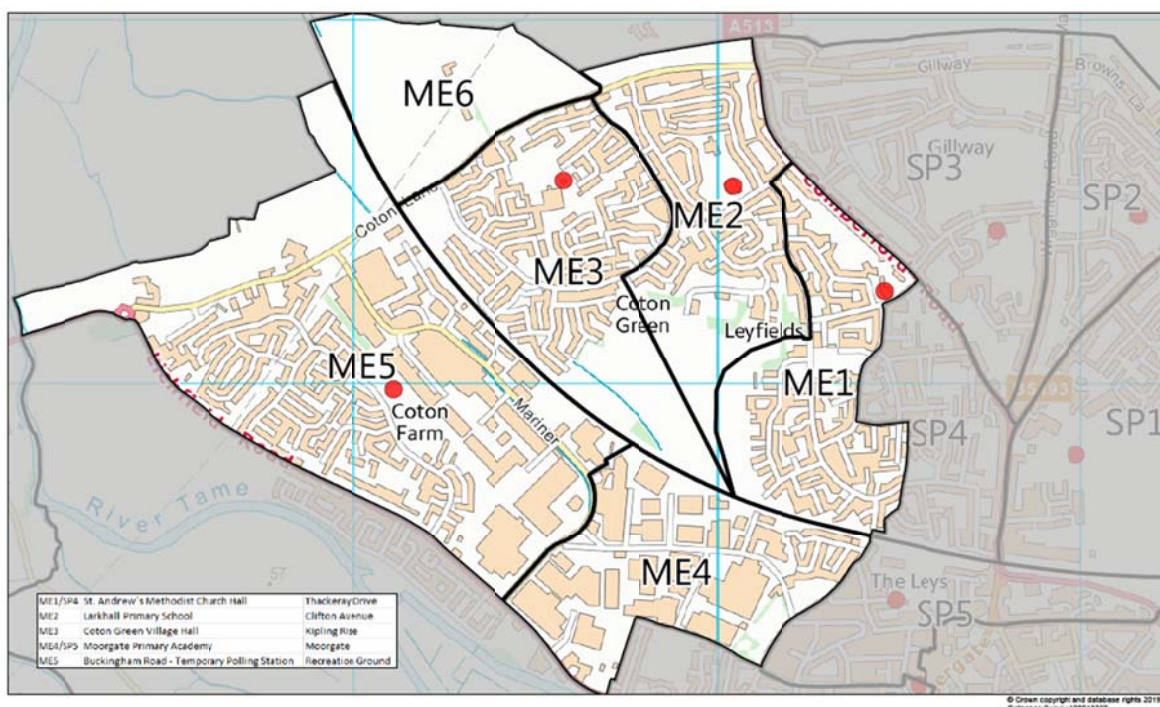
<sup>2</sup> Based on the average of 82% of electors choosing to attend a polling station.





# Mercian Ward

## Existing Polling Districts



<i>Polling District</i>	<i>Polling Station</i>	<i>Electorate</i>	<i>Recommendations</i>
ME1	St Andrew's Methodist Church Hall	1421	No change
ME2	Larkhall Primary School	1049	No change
ME3	Coton Green Village Hall	1314	No change
ME4	Moorgate Primary Academy	166	No change
ME5	Buckingham Road – Temporary Station	1293	No change
ME6	Coton Green Village Hall	91	Change - Move properties from Coton Lane that were formally in ME5 to this polling district.

## Existing Polling Stations

<i>Polling Station</i>	<i>Polling District</i>	<i>Polling Station Electorate</i>	<i>Disabled Access</i>	<i>Recommendations</i>
St Andrew's Methodist Church Hall	ME1	1209	Yes	No change
Larkhall Primary School	ME2	881	Yes	No change
Coton Green Village Hall	ME3	1070	Yes	No change
Moorgate Primary Academy	ME4	148	Yes	No change
Buckingham Road – Temporary Station	ME5	1065	Yes <sup>1</sup>	Change - Move properties from Coton Lane that were formally in ME5 to this polling district.
Coton Green Village Hall	ME6	76	Yes	No change

<sup>1</sup> Although temporary stations are suitably equipped to enable access for all voters (ramps and handrails for disabled access) there are still ongoing concerns due to inherent characteristics of mobile units, such as their narrow entrance and limited internal area.

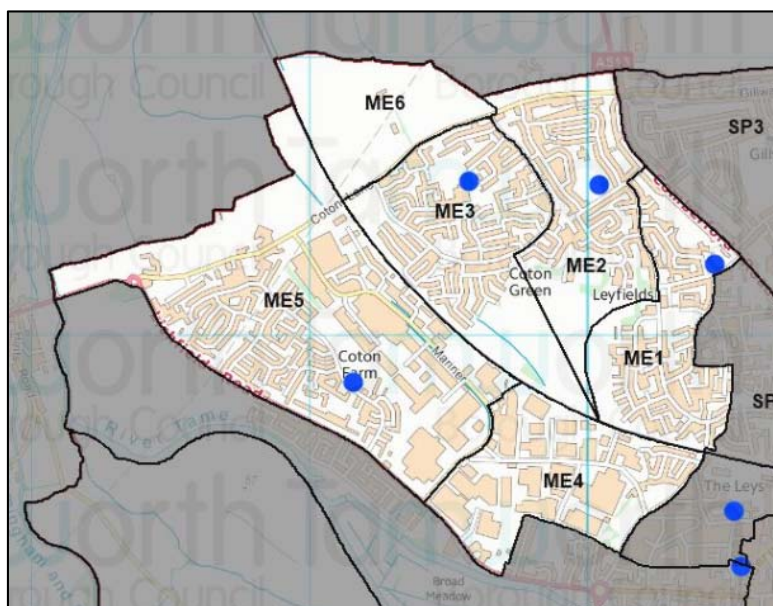
## **Recommendations**

No alternatives to the current polling district and polling place scheme were suggested as part of the consultation. No complaints have been received from any electors regarding the provision of polling places or the polling station facilities provided as part of the consultation. Therefore, with the exception of moving the properties on Coton Lane from the ME5 polling district into the ME6 polling district, it is recommended that no changes are made to the polling districts within the Mercian Ward

It is also recommended that polling place represent the same area as the polling district plus the adjoining polling district(s) to allow a greater degree of flexibility in deciding where a polling station should be located should the need arise.



## Summary of proposed new Polling Districts and Polling Stations



<i>New Polling District</i>	<i>Proposed Polling Station</i>	<i>Address</i>	<i>Estimated Electorate<sup>2</sup></i>	<i>Estimated Polling Station Electorate<sup>3</sup></i>	<i>No of polling stations</i>
ME1	St Andrew's Methodist Church Hall	Thackeray Drive, B79 8HY	2389	1959	2
ME2	Larkhall Primary School	Clifton Avenue, Tamworth, B79 8EF	1464	1200	1
ME3	Coton Green Village Hall	Kipling Rise, Coton Green, B79 7UF	1799	1475	2 (when building complete)
ME4	Moorgate Primary Academy	Moorgate, Tamworth, B79 7EL	244	200	1
ME5	Buckingham Road – Temporary Station	Recreation Ground, Buckingham Road	1583	1298	1
ME6	Coton Green Village Hall	Kipling Rise, Coton Green, B79 7UF	676	554	Combine with ME3

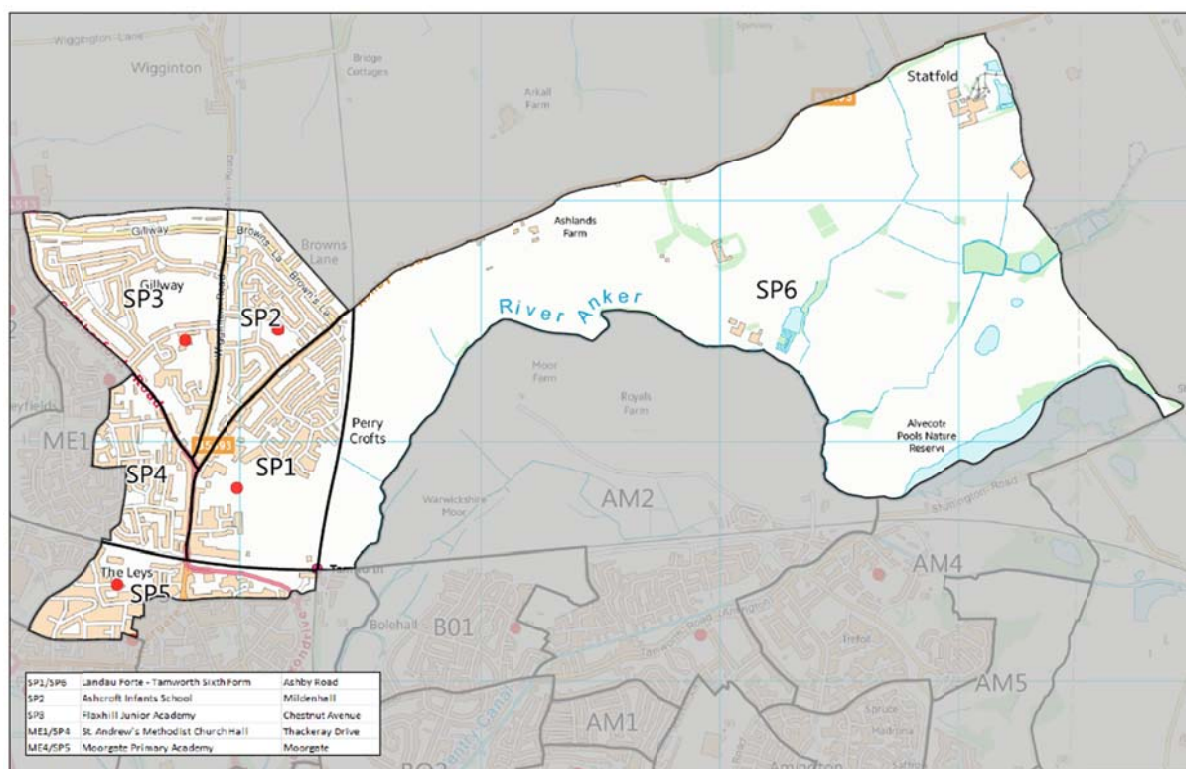
<sup>2</sup> Estimated Electorate = Number of Properties x 2.61589

<sup>3</sup> Based on the average of 82% of electors choosing to attend a polling station.



# Spital Ward

## Existing Polling Districts



## Existing Polling Districts

<i>Polling District</i>	<i>Polling Station</i>	<i>Electorate</i>	<i>Recommendations</i>
SP1	Landau Forte – Tamworth Sixth Form	997	No change
SP2	Ashcroft Infants School	1104	No change
SP3	Flaxhill Junior School	1531	No change
SP4	St Andrew's Methodist Church Hall	777	No change
SP5	Moorgate Primary Academy	1042	No change
SP6	Landau Forte – Tamworth Sixth Form	257	No change

## Existing Polling Stations

<i>Polling Station</i>	<i>Polling District</i>	<i>Polling Station Electorate</i>	<i>Disabled Access</i>	<i>Recommendations</i>
Landau Forte – Tamworth Sixth Form	SP1	705	Yes	No change
Ashcroft Infants School	SP2	870	Yes	No change
Flaxhill Junior School	SP3	1230	Yes	No change
St Andrew's Methodist Church Hall	SP4	606	Yes	No change
Moorgate Primary Academy	SP5	857	Yes	No change
Landau Forte – Tamworth Sixth Form	SP6	227	Yes	Change - Move to Ashcrofts Infants School.

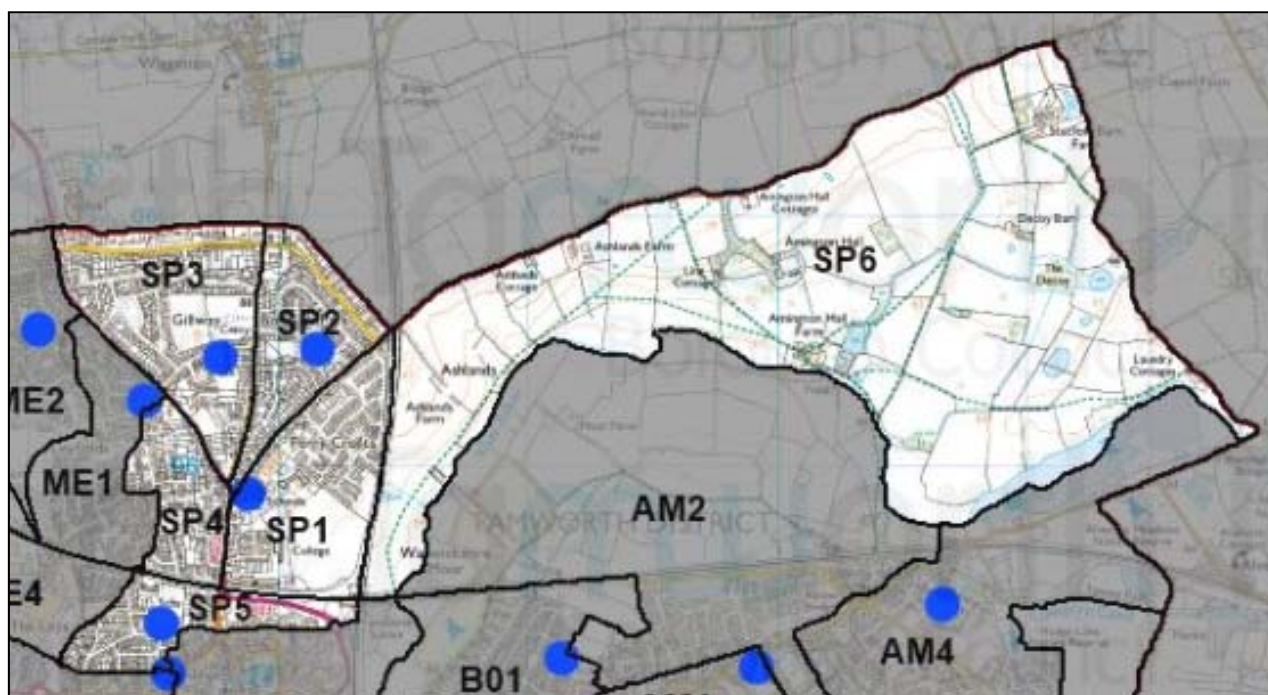
## **Recommendations**

A submission was received from the Tamworth Conservative Councillors and Tamworth Conservative Association requesting a temporary polling station for the SP6 polling district as there is quite a distance to the current polling station. Currently, the electorate is very small in this development. The polling district will be kept under review and once the electorate reaches a suitable level a polling station within the polling district will be used. It is not feasible at the moment to place a temporary station here as the estate is still a building site. There are small areas of open space but none of these have yet been adopted by the local authority. Therefore, the polling place for the SP6 ward will move from its current location at Landau Forte – Tamworth Sixth Form and relocated to Ashcroft Infants School.

No comments have been received from any electors requesting changes at any of the recent polls and therefore, no change is proposed to the current polling district, places and polling station with the exception of relocating the polling station for the SP6 polling district.

Finally, it is recommended that polling place represent the same area as the polling district plus the adjoining polling district(s) to allow a greater degree of flexibility in deciding where a polling station should be located should the need arise.

## Summary of proposed new Polling Districts and Polling Stations



<i>New Polling District</i>	<i>Proposed Polling Station</i>	<i>Address</i>	<i>Estimated Electorate<sup>1</sup></i>	<i>Estimated Polling Station Electorate<sup>2</sup></i>	<i>No of polling stations</i>
SP1	Landau Forte – Tamworth Sixth Form	Ashby Road, Tamworth, B79 8AA	1,414	1160	1
SP2	Ashcroft Infants School	Mildenhall, B79 8RU	1,537	1260	1
SP3	Flaxhill Junior School	Chestnut Avenue, Gillway, B79 8QZ	2,267	1859	2
SP4	St Andrew's Methodist Church Hall	Thackeray Drive, B79 8HY	1,147	940	1
SP5	Moorgate Primary Academy	Moorgate, Tamworth, B79 7EL	1,812	1486	1
SP6	Landau Forte – Tamworth Sixth Form	Ashby Road, Tamworth, B79 8AA	1,560	1279	Combine with SP2

<sup>1</sup> Estimated Electorate = Number of Properties x 2.61583

<sup>2</sup> Based on the average of 82% of electors choosing to attend a polling station.

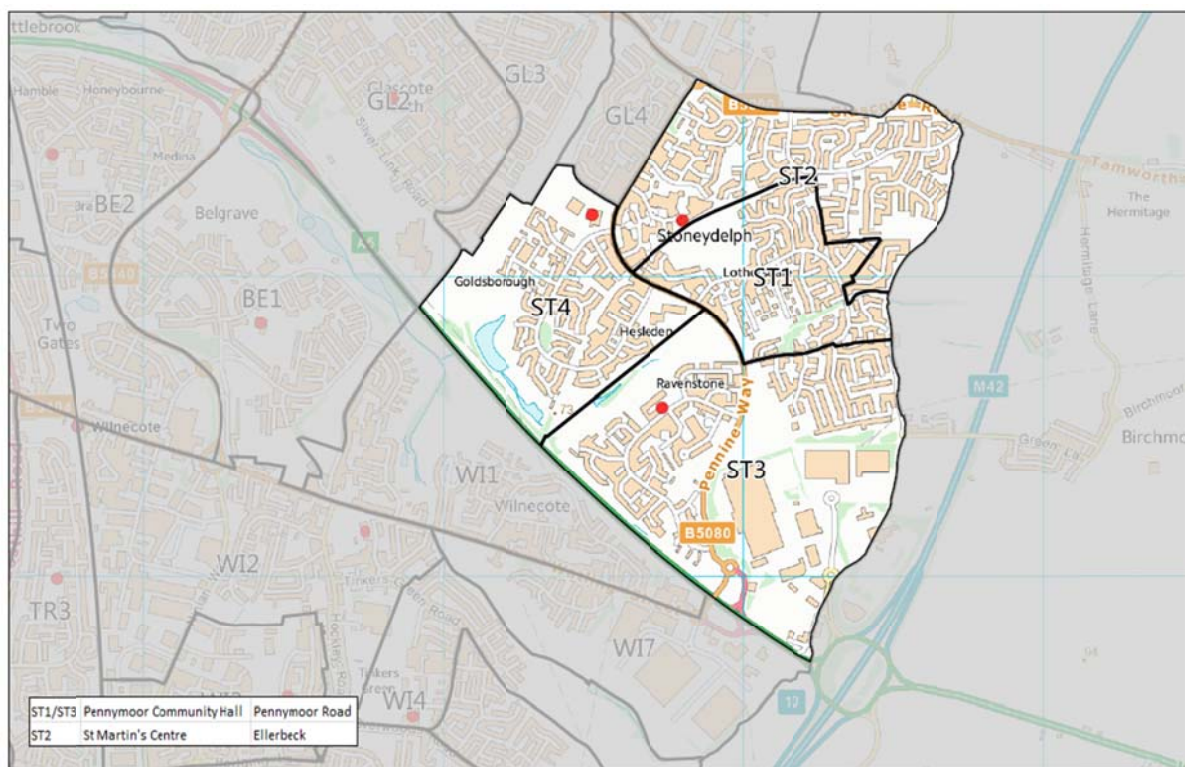
**Note regarding SP6** - The estimated electorate figures are based on completion of building works = estimated number of properties x 2.6. The estimated Polling station electorate is based on 18% of electorate opting to vote by post. The electorate in the area will be monitored and when required a polling place within the polling district or adjacent polling districts will be found.





# Stonydelph Ward

## Existing Polling Districts



## Existing Polling Districts

<i>Polling District</i>	<i>Polling Station</i>	<i>Electorate</i>	<i>Recommendations</i>
ST1	Pennymoor Community Hall	1,287	No change
ST2	St Martin's Centre	1,686	Change - Move Marrick to ST1
ST3	Pennymoor Community Hall	1,628	No change
ST4	Stoneydelph Primary School	1,134	No change

## Existing Polling Stations

<i>Polling Station</i>	<i>Polling District</i>	<i>Polling Station Electorate</i>	<i>Disabled Access</i>	<i>Recommendations</i>
Pennymoor Community Hall	ST1	1,034	Yes	No change
St Martin's Centre	ST2	1,388	Yes	No change
Pennymoor Community Hall	ST3	1,341	Yes	No change
Stoneydelph Primary School	ST4	981	Yes	No change

## Recommendations

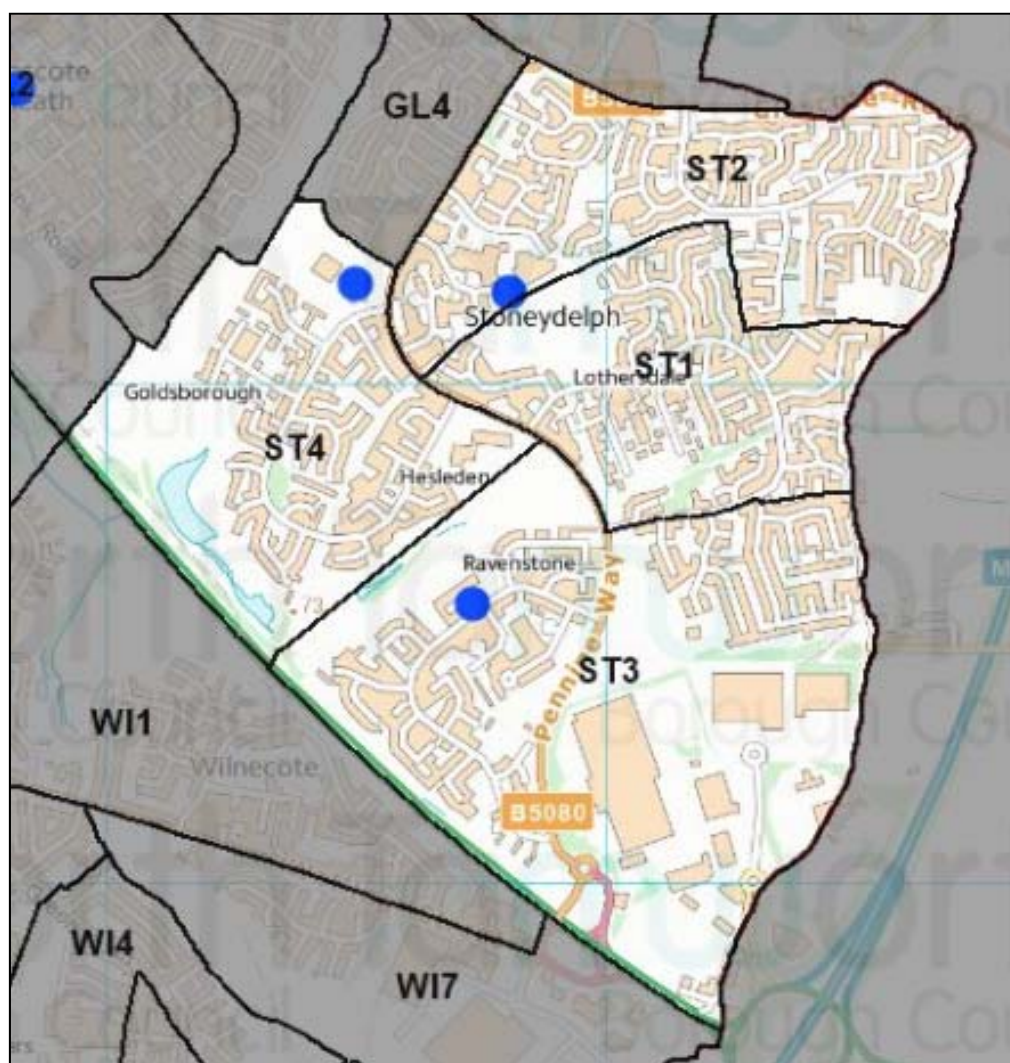
A submission was received from the Tamworth Conservative Councillors and Tamworth Conservative Association requesting a temporary polling station for the ST2 polling district. Currently, the ST2 polling district vote at St Martin in the Delph Community Centre on Ellerbeck. I believe that this building is ideal for voting purposes as it offers plenty of parking, included a number of dedicated disabled parking bays. It is accessible on foot from this housing estate via a number of routes including the pedestrian Stonydelph Lane. The building is fully accessible with a ramp to the frontage to aid access.

The only area of open space is the land adjacent to Broadlee. The widest access point is located by numbers 33 and 34 and it is highly unlikely that a HGV would be able to access the area due to its narrow entrance. This open space is located on a downhill slope although the green area is reasonable flat. This would mean that electors would have a fairly steep uphill walk after casting their vote. This could be an issue for anyone with mobility issues as there is not a dedicated disabled parking bay and street parking is extremely limited. According to statistics provided by Staffordshire Observatory there are approximately 7,000 people within the borough who have mobility issues and an unknown number of people with other impediments. We must be very careful about not accidentally disenfranchising an elector as they are unable to access voting facilities easily. Section 16 of the Electoral Administration Act 2006 has placed a requirement on the local authority to review the accessibility of all polling stations. This review is undertaken at every poll and includes a polling station questionnaire that electors can complete if they wish to. No complaints have been received at the recent elections in regard to accessibility issues.

Due to the fact that I have concerns regarding accessibility for disabled electors and the fact that no comments have been received from electors at the recent polls requesting any changes. I therefore, propose no changes to the polling districts in this ward with the exception of the relocation of Marrick from ST2 to ST1.

Finally, is recommended that polling place represent the same area as the polling district plus the adjoining polling district(s) to allow a greater degree of flexibility in deciding where a polling station should be located should the need arise.

## Summary of proposed new Polling Districts and Polling Stations



<i>New Polling District</i>	<i>Proposed Polling Station</i>	<i>Address</i>	<i>Estimated Electorate<sup>1</sup></i>	<i>Estimated Polling Station Electorate<sup>2</sup></i>	<i>No of polling stations</i>
ST1	Pennymoor Community Hall	Pennymoor Road, Stonydelph, B77 4LG	1,794	1,471	1
ST2	St Martin's Centre	Ellerbeck, Stonydelph, B77 4JA	2,600	2,132	2
ST3	Pennymoor Community Hall	Pennymoor Road, Stonydelph, B77 4LG	2,278	1,868	1
ST4	Stoneydelph Primary School	Crowden Road, Stonydelph, B77 4LS	1,599	1,311	1

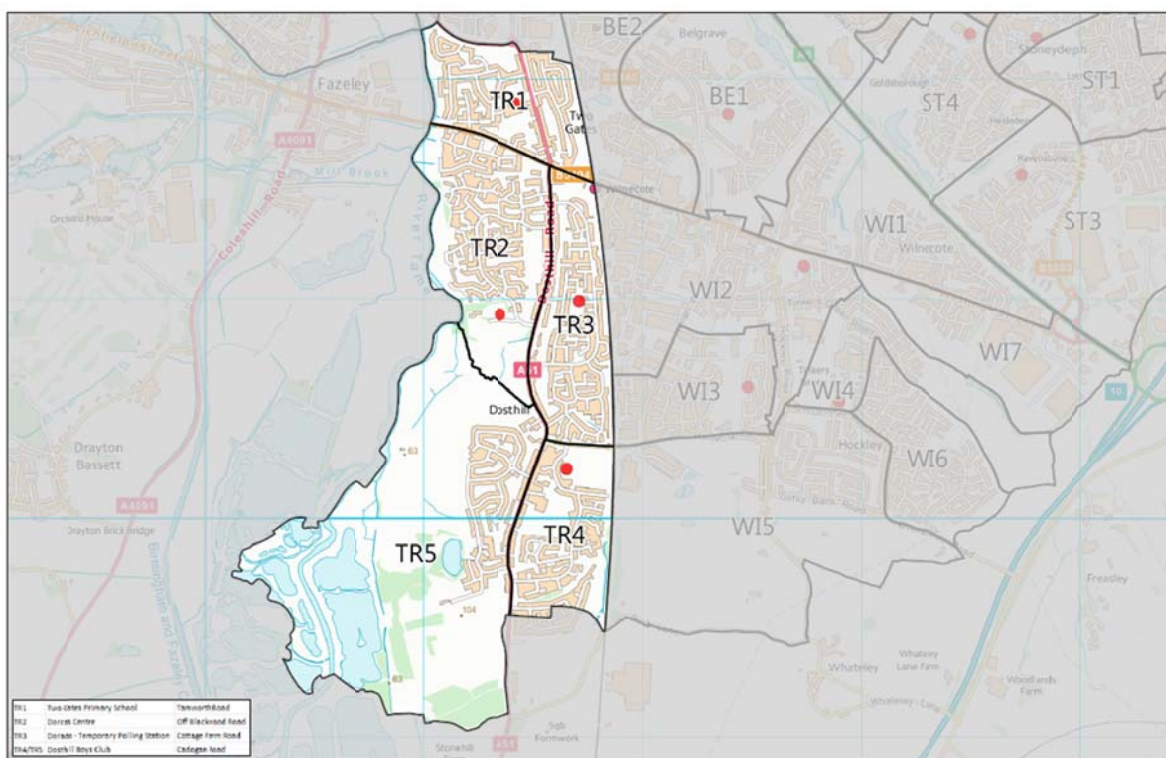
<sup>1</sup> Estimated Electorate = Number of Properties x 2.61583

<sup>2</sup> Based on the average of 82% of electors choosing to attend a polling station.



# Trinity Ward

## Existing Polling Districts



## Existing Polling Districts

<i>Polling District</i>	<i>Polling Station</i>	<i>Electorate</i>	<i>Recommendations</i>
TR1	Two Gates Primary School	1,281	No change
TR2	Dorcas Centre	1,240	No change
TR3	Dorado – Temporary Station	1,401	No change
TR4	Dosthill Boys Club	997	No change
TR5	Dosthill Boys Club	845	No change

## Existing Polling Stations

<i>Polling Station</i>	<i>Polling District</i>	<i>Polling Station Electorate</i>	<i>Disabled Access</i>	<i>Recommendations</i>
Two Gates Primary School	TR1	1,076	Yes	No change
Dorcas Centre	TR2	989	Yes	No change
Dorado – Temporary Station	TR3	1,172	Yes <sup>1</sup>	No change
Dosthill Boys Club	TR4	814	Yes	No change
Dosthill Boys Club	TR5	644	Yes	No change

<sup>1</sup> Although temporary stations are suitably equipped to enable access for all voters (ramps and handrails for disabled access) there are still ongoing concerns due to inherent characteristics of mobile units, such as their narrow entrance and limited internal area.



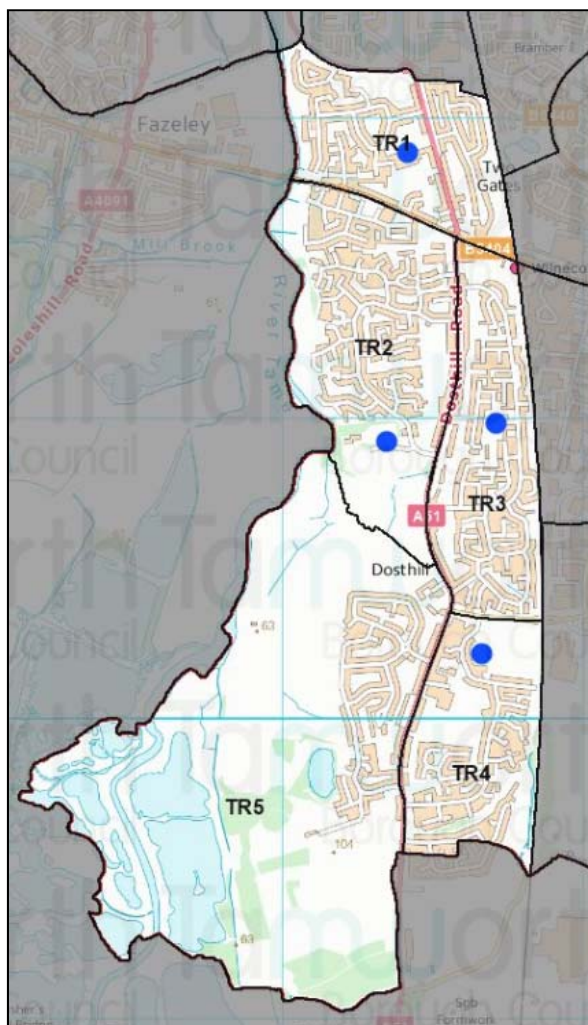
## **Recommendations**

Out of the submissions received only one requested a change as the result of using a school as a polling station. It should be noted that although the Trinity Ward currently uses one school as polling station the head teacher is informed of scheduled polls several years in advance thus allowing ample time to plan for a Teacher Training Inset Day. This should help keep disruption and inconvenience to a minimum. Whilst head teachers must provide the Returning Officer with a suitable room to facilitate voting it is not the Returning Officer who chooses to close the school. This is a decision taken by the head teacher and in fact a number of schools that are used as polling stations throughout the borough remain either fully or partially open on polling days.

Schools are required under statute to be made available for voting purposes. This is partly due to the fact that as a public building the access must meet all requirements set out in the Equality Act 2010. Accessibility for disabled voters is a very important issue and ensuring that polling stations are suitable for all sorts of disability is essential. According to statistics provided by Staffordshire Observatory there are approximately 7,000 people within the borough who have mobility issues and an unknown number of people with other impediments. We must be very careful about not accidentally disenfranchising an elector as they are unable to access voting facilities easily. Section 16 of the Electoral Administration Act 2006 has placed a requirement on the local authority to review the accessibility of all polling stations. A review is undertaken at every poll and a polling station questionnaire is available for completion by electors. No complaints have been received at any of the recent elections in regard to accessibility issues in the Trinity Ward. Therefore, no changes are proposed to any of the polling stations currently used.

It is recommended that polling place represent the same area as the polling district plus the adjoining polling district(s) to allow a greater degree of flexibility in deciding where a polling station should be located should the need arise.

## Summary of proposed new Polling Districts and Polling Stations



<i>New Polling District</i>	<i>Proposed Polling Station</i>	<i>Address</i>	<i>Estimated Electorate<sup>2</sup></i>	<i>Estimated Polling Station Electorate<sup>3</sup></i>	<i>No of polling stations</i>
TR1	Two Gates Primary School	Tamworth Road, B77 1EN	1,934	1,586	1
TR2	Dorcas Centre	Dosthill, B77 1JE	1,617	1,326	1
TR3	Dorado – Temporary Station	Cottage Farm Road, Dosthill	1,955	1,603	1
TR4	Dosthill Boys Club	Cadogan Road, Dosthill, B77 1PQ	1,388	1,138	1
TR5	Dosthill Boys Club	Cadogan Road, Dosthill, B77 1PQ	1,165	955	1

<sup>2</sup> Estimated Electorate = Number of Properties x 2.61583

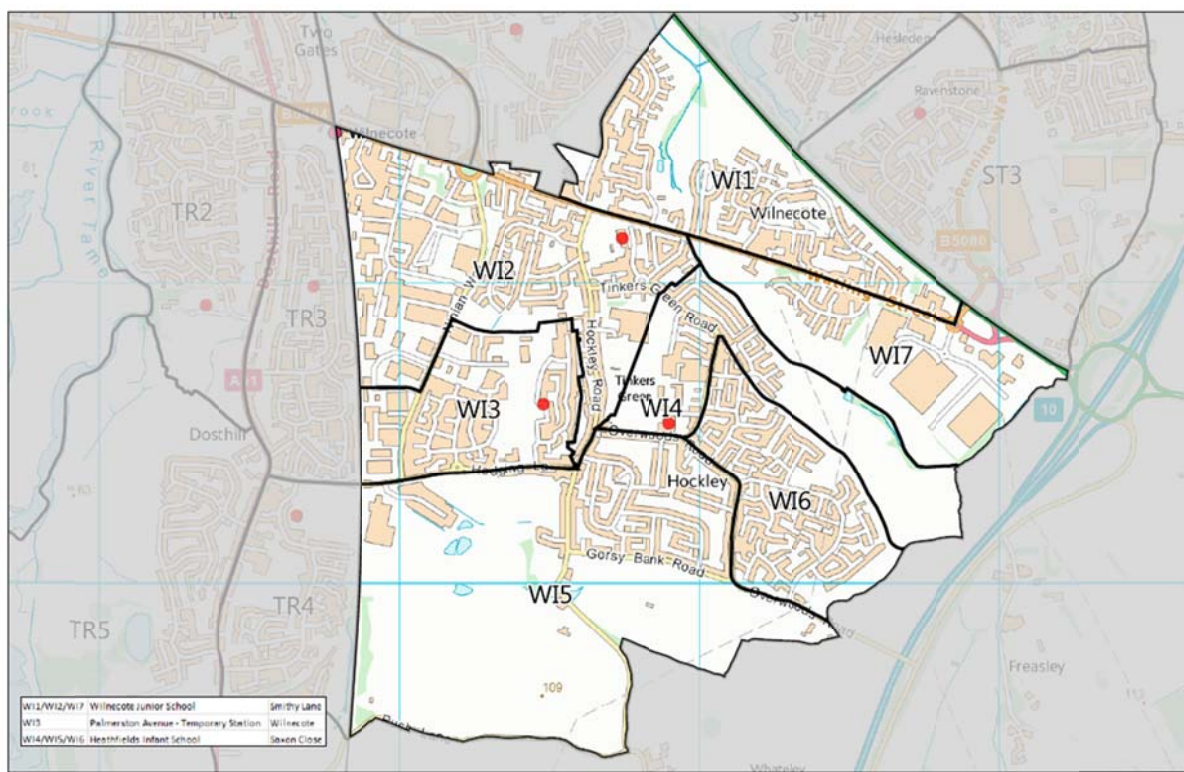
<sup>3</sup> Based on the average of 82% of electors choosing to attend a polling station.





# Wilnecote Ward

## Existing Polling Districts



## Existing Polling Districts

Polling District	Polling Station	Electorate	Recommendations
WI1	Wilnecote Junior School	1,371	No change
WI2	Wilnecote Junior School	1,215	No change
WI3	Palmerston Avenue – Temporary Station	987	Change – take in properties from remainder of Hedging Lane, Blackberry Way, some properties on Hockley Road and Whateley Lane to move into WI3
WI4	Heathfields Infants School	479	Change - combine with WI6
WI5	Heathfields Infants School	1,227	Change – remainder of Hedging Lane, Blackberry Way, some properties on Hockley Road and Whateley Lane to move into WI3.
WI6	Heathfields Infants School	1,297	Change – combine with WI4
WI7	Wilnecote Junior School	275	Change – rename WI6

## Existing Polling Stations

Polling Station	Polling District	Polling Station Electorate	Disabled Access	Recommendations
Wilnecote Junior School	WI1	1105	Yes	No change
Wilnecote Junior School	WI2	1017	Yes	No change
Palmerston Avenue – Temporary Station	WI3	819	Yes <sup>1</sup>	No change

<sup>1</sup> Although temporary stations are suitably equipped to enable access for all voters (ramps and handrails for disabled access) there are still ongoing concerns due to inherent characteristics of mobile units, such as their narrow entrance and limited internal area.

<i>Polling Station</i>	<i>Polling District</i>	<i>Polling Station Electorate</i>	<i>Disabled Access</i>	<i>Recommendations</i>
Heathfields Infants School	WI4	399	Yes	No change
Heathfields Infants School	WI5	980	Yes	No change
Heathfields Infants School	WI6	1016	Yes	No change
Wilnecote Junior School	WI7	217	Yes	No change

## Recommendations

A submission was received asking for some of the polling districts to be amended in this ward. After looking at the map it seems sensible to combine polling districts WI4 and WI6 as suggested. These will be combined and will be renamed WI4. The polling district will still vote at Heathfields Infants School. The WI7 polling district will be renamed WI6.

The amendment to the WI5 and WI3 polling district seems as sensible solution. Therefore, the remainder of Hedging Lane including part of Hockley Road and Whateley Lane will be incorporated into the WI3 polling district. These electors will vote at the temporary station located on Palmerston Avenue.

It should be noted that although the Wilnecote Ward currently uses two schools as polling station the head teachers are informed of scheduled polls several years in advance thus allowing ample time to plan for a Teacher Training Inset Day. This should help keep disruption and inconvenience to a minimum. Whilst head teachers must provide the Returning Officer with a suitable room to facilitate voting it is not the Returning Officer who chooses to close the school. This is a decision taken by the head teacher and in fact a number of schools that are used as polling stations throughout the borough remain either fully or partially open on polling days.

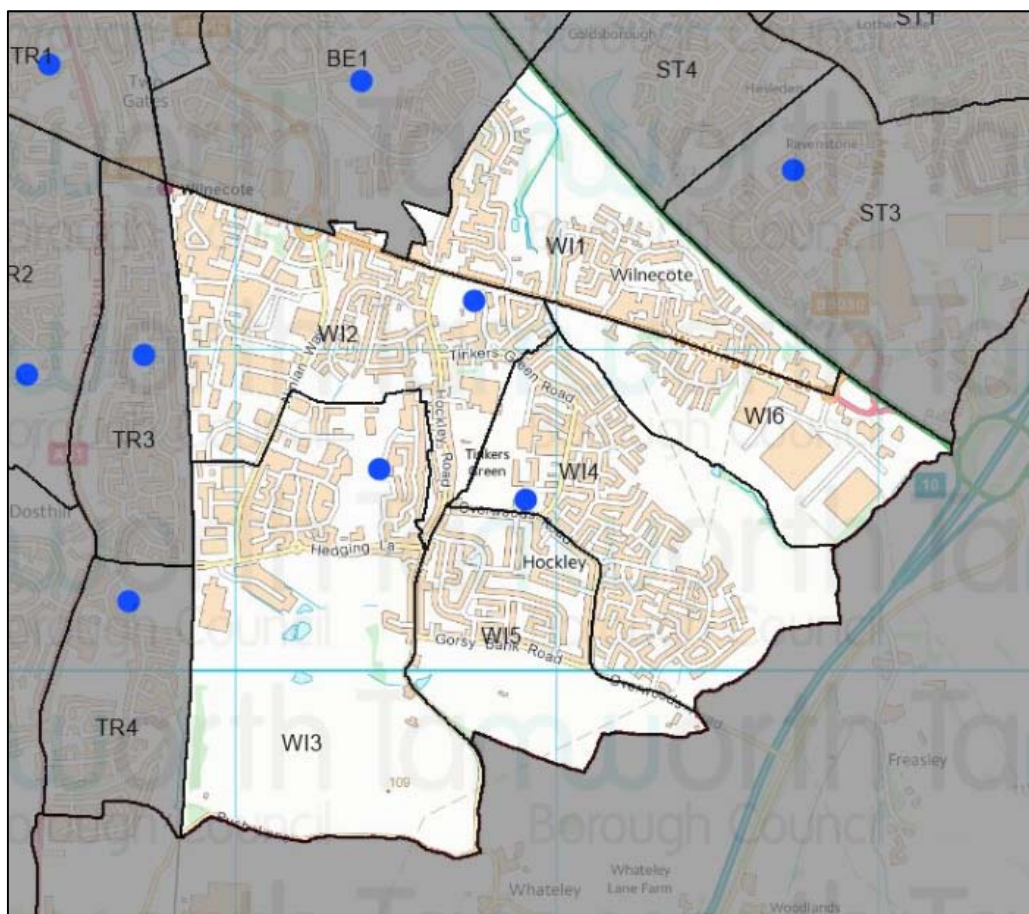
Schools are required under statute to be made available for voting purposes. This is partly due to the fact that as a public building the access must meet all requirements set out in the Equality Act 2010. Accessibility for disabled voters is a very important issue and ensuring that polling stations are suitable for all sorts of disability is essential. According to statistics provided by Staffordshire Observatory there are approximately 7,000 people within the borough who have mobility issues and an unknown number of people with other impediments. We must be very careful about not accidentally disenfranchising an elector as they are unable to access voting facilities easily. Section 16 of the Electoral Administration Act 2006 has placed a requirement on the local authority to review the accessibility of all polling stations. A review is undertaken at every poll and a polling station questionnaire is available for completion by electors. No complaints have been received at any of the recent elections in regard to accessibility issues in the Wilnecote Ward.

The newly built but unfinished Scout Hut adjacent to Ninefoot Park actually just falls into the Belgrave Ward. At present there is an uneven surface in the car park and there is no dedicated disabled parking bay. The car park is also utilised by the local businesses and the nearby churches so parking in this location could potentially be an issue.

Wilnecote Village Hall is too far away from the main population of the ward and there are no transport routes that would help facilitate the electorate to travel there.

Therefore, at the present time I am proposing no changes to the current polling stations and that polling place represent the same area as the polling district plus the adjoining polling district(s) to allow a greater degree of flexibility in deciding where a polling station should be located should the need arise.

## Summary of proposed new Polling Districts and Polling Stations



<i>New Polling District</i>	<i>Proposed Polling Station</i>	<i>Address</i>	<i>Estimated Electorate<sup>2</sup></i>	<i>Estimated Polling Station Electorate<sup>3</sup></i>	<i>No of polling stations</i>
WI1	Wilnecote Junior School	Smithy Lane, B77 5LA	1,804	1,480	1
WI2	Wilnecote Junior School	Smithy Lane, B77 5LA	1,888	1,548	1
WI3	Palmerston Avenue – Temporary Station	Wilnecote, Tamworth, B77 5FE	1,544	1,266	1
WI4	Heathfields Infants School	Saxon Close, B77 5LU	2,582	2,117	2
WI5	Heathfields Infants School	Saxon Close, B77 5LU	1,872	1,535	1
WI6	Wilnecote Junior School	Smithy Lane, B77 5LA	372	3,05	Combined with WI1

<sup>2</sup> Estimated Electorate = Number of Properties x 2.1588

<sup>3</sup> Based on the average of 82% of electors choosing to attend a polling station.